



DOCUMENTSCAN SDK

Developers Guide

[Content description](#)

This is a reference manual and configuration guide for the NeoCheck DocumentScan SDK product. It shows how to interact with the .Net library in order to manipulate supported capture devices and support further processes in a fast and easy way.

Madrid, December 4th 2017

Disclaimer

The information contained within this document is and shall remain the property of NeoCheck. It must not be produced in whole or in part, or given or communicated to any third party without the prior consent of NeoCheck.

Whilst careful attention have been paid to ensure the appropriate referencing of information and sources, it is possible that a document of this nature might contain some errors. In such cases, upon notification NeoCheck will immediately analyse and make any required corrections or amendments.

©NeoCheck 2017



Release Notes

Version	Date	Description
1.0	04/12/2017	Initial Version



Index

1	Introduction	4
1.1	Document Scanner implementations	4
2	Installation	5
2.1	DocumentScan SDK Licensing	5
3	.NET Reference.....	6
3.1	Classes.....	6
3.2	Enums.....	6
3.3	Methods.....	7
3.3.1	DocumentScanSDK.GetInstance method.....	7
3.3.2	DocumentScanSDK.ConfigureAndScan method	7
3.3.3	DocumentScanSDK.Scan method	7



1 Introduction

This user manual describes the different functions and features provided in the NeoCheck DocumentScan SDK. The purpose of this SDK is to provide functionality to scan documents using a flatbed scanner.

1.1 Document Scanner implementations

For the time being, the Document Scanner implementation included with the Document Scan SDK is WIA (Windows Image Acquisition), which is a proprietary Microsoft driver model and application programming interface (API) for Microsoft Windows Me and later Windows operating systems that enables graphics software to communicate with imaging hardware such as scanners, digital cameras and Digital Video-equipment.



2 Installation

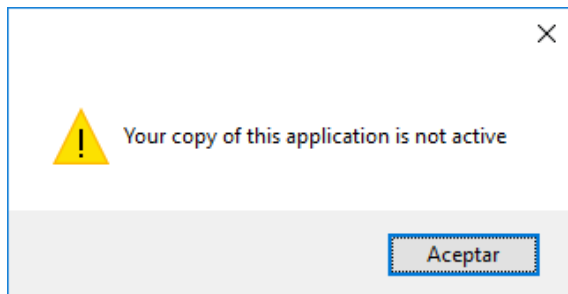
There are a set of prerequisites before start using the DocumentScan SDK:

- Windows XP/7/10
- .NET framework 4.6

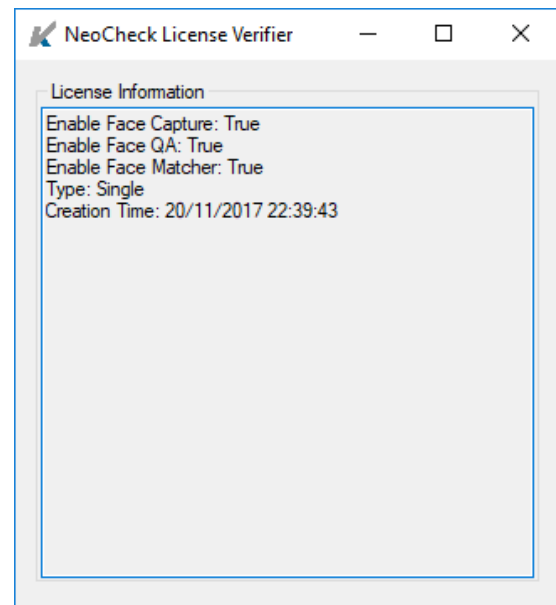
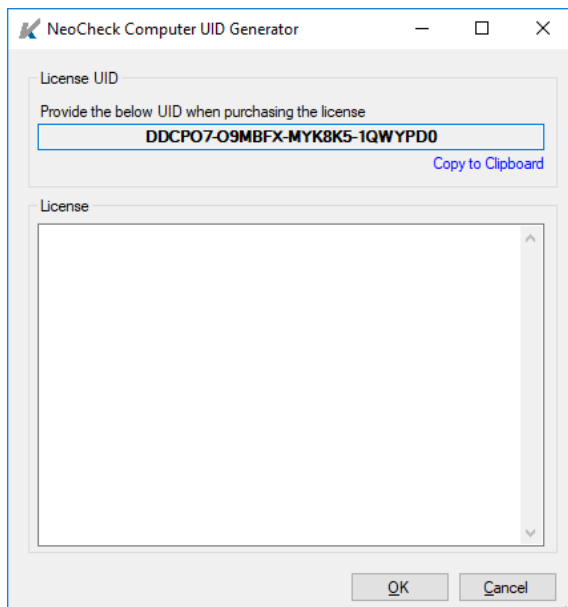
The DocumentScan SDK comes as a set of DLL libraries that are distributed together, along with a Demo application and C# sample code.

2.1 DocumentScan SDK Licensing

In order to activate the SDK, it is necessary to execute the NeoCheckLicenseVerifier tool. The following message will be displayed until a valid NeoCheckLicense.lic file is found:



A new window will be loaded showing your machine UID which should be sent to licenses@neocheck.com for generating the activation code. Once you paste the provided code in the lower textbox, a .lic file is going to be created in the execution route.



3 .NET Reference

NeoCheck Document Scan SDK has a set of components for scanning with A4 scanners.

3.1 Classes

NAME	DESCRIPTION
DocumentScanSDK	The main point of entry of the Document Scan SDK. Provides methods to configure and scan documents with A4 scanners.
IDocumentScanner	Represents the base class to operate with A4 scanners connected to the computer, providing methods to configure and scan documents.
WIAScanner	Scanner implementation, using the Microsoft WIA API.

3.2 Enums

NAME	DESCRIPTION
DocumentScanImplementation	The document scanner implementations available to interact with A4 scanners connected to the computer. Values: WIA
ErrorCode	Code retrieved when an error occurred while configuring or scanning a document. Values: BUSY COVER_OPEN DEVICE_COMMUNICATION DEVICE_LOCKED EXCEPTION_IN_DRIVER GENERAL_ERROR INCORRECT_HARDWARE_SETTING INVALID_COMMAND INVALID_DRIVER_RESPONSE ITEM_DELETED LAMP_OFF MAXIMUM_PRINTER_ENDORSER_COUNTER MULTI_FEED OFFLINE PAPER_EMPTY PAPER_JAM PAPER_PROBLEM WARMING_UP USER_INTERVENTION NO_DEVICE_AVAILABLE
ImageFormat	Result image format used when configuring scan. Default value is JPEG. Values: BMP GIF JPEG PNG TIFF



3.3 Methods

Following a list of all public methods from DocumentScan SDK.

3.3.1 DocumentScanSDK.GetInstance method

Returns a unique instance (Singleton) of the DocumentScan SDK.

PARAMETER	DESCRIPTION
DocumentScanImplementation	The document scanner implementation used to interact with A4 scanners connected to the computer.

3.3.2 DocumentScanSDK.ConfigureAndScan method

Allows the user to scan a document by showing the default scan configuration system dialog, in which several parameters can be configured, such as BW/Color, Image Quality (DPI's), and others. The format of the result image can be configured using the format parameter. Default value is JPEG.

PARAMETER	DESCRIPTION
ImageFormat format	The format of the result image scanned.

3.3.3 DocumentScanSDK.Scan method

Allows the user to scan a document by using the default configuration for the document scanner connected, so there is no need for any user interaction with system dialogs to scan the document.

PARAMETER	DESCRIPTION
ImageFormat format	The format of the result image scanned.